



GREATER EGYPT LONG RANGE TRANSPORTATION PLAN

STEERING COMMITTEE MEETING #1

AUGUST 6, 2021

AGENDA

- Introductions
- Steering Committee Roles and Responsibilities
- What is a Rural Long Range Transportation Plan?
- Review Scope of Work
- Review Public Engagement Strategy
- Refine the SWOT Analysis
- Refine the Vision
- Develop Goals
- Next Steps



GREATER EGYPT REGIONAL PLANNING AND DEVELOPMENT COMMISSION



- Joe Zdankiewicz, Director of Transportation Planning



- Cary Minnis, Executive Director



WHY WE'RE HERE

Planning leads to projects

- SIMPO ITEP funding - \$11M
- SIMPO Safety Funding - \$5.5M
- GE Region Safety Funding - \$8.3M



THE TEAM



- Dustin Riechmann, PE, PTOE



- Katy Shackelford, AICP, PTP



- Peter Williams, AICP



- Stephen Ibendahl, AICP, ASLA



- Brian Ziegler, PE

STEERING COMMITTEE



Jackson County Engineer	Mitch Burdick, P.E.
Franklin County Engineer	Michael A. Rolla, P.E.
Williamson County Engineer	Travis Emory, P.E.
Jefferson County Engineer	Brandon Simmons
Perry County Engineer	Brian Otten
RIDES	Adam Lach
SCMT	Randy Barrow
Jackson County Transit	Shawn Freeman
IDOT Local Roads	Doug Helfrich
MTC-SIWDB	Kathy Lively
Mt. Vernon Airport	Chris Collins
Veterans Airport	Doug Kimmel
Southern Illinois Airport	Gary Shafer
Economic Development	Jennifer Olson
SI NOW	Sarah Gray
Ride Illinois	Grant R. Miller
Farm Bureau	Bruce Rodely
Corps Engineers	Tyson Zobrist
Street Commission, Benton	Lee Messersmith
Mt. Vernon Public Works Director	Brad Ruble

YOUR ROLE

- Focus on the **FUTURE** of Greater Egypt
- **YOU** are the expert, share your knowledge
- Research issues, bring us your ideas, be educated advocates
- Educate and inform your neighbors about the plan and its process
- Encourage others to get involved and share their ideas



YOUR RESPONSIBILITY

Guidance, Vision, and Oversight

- Develop and refine a vision for Greater Egypt's transportation future, including goal(s), and guiding principles
- Use data to inform strategy development and learning
- Track progress of work
- Interact with the Greater Egypt Regional Planning Commission and consultants on strategy, community engagement, and shared performance measurement

Leadership

- Consider how your individual organization or those in your network can align with the goals of the Plan
- Serve as a vocal champion of the collective impact effort in the community

Process

- Participate in-person in regularly scheduled meetings
- Review pre-read materials prior to meetings and come prepared for engaged discussion, active listening, and respectful dialogue
- Commit to 9 month membership in the Steering Committee



WHY PLAN FOR TRANSPORTATION?



TRANSPORTATION ISN'T JUST A WAY OF MOVING FROM POINT **A** TO POINT **B**

WHY PLAN FOR TRANSPORTATION?

It guides investment . . .

- Helps identify new opportunities for growth, development, and integration;
- Helps avoid or mitigate foreseeable challenges;
- Helps local governments better maintain their existing infrastructure and services enjoyed today; and
- Keeps all travelers safe, no matter the mode of transportation;

WHY PLAN FOR TRANSPORTATION?

It acts as a catalyst. . .

- Allows cities to use their roads, trails, and sidewalks as an investment tool to help achieve larger goals;
- Spurs economic development and community revitalization by creating a sense of place;
- Allows for more choice and opportunity for residents; and
- Improves efficiencies in moving goods and services that can attract businesses, private investment, and create jobs

WHY PLAN FOR TRANSPORTATION?

It builds healthier communities. . .

- Helps to create more active transportation infrastructure that can directly impact the physical and social health of a community.
- Brings resources, investment, and equity to communities; and
- Helps reduce the negative impacts of environment in which we choose to live.

Skills + **Plan** + **Resources** + **Incentives** = **CONFUSION**

Shared Vision + **Plan** + **Resources** + **Incentives** + **Leadership** = **ANXIETY**

Shared Vision + **Skills** + **Resources** + **Incentives** + **Leadership** = **FALSE STARTS**

Shared Vision + **Skills** + **Plan** + **Incentives** + **Leadership** = **FRUSTRATION**

Shared Vision + **Skills** + **Plan** + **Resources** + **Leadership** = **GRADUAL CHANGE**

Shared Vision + **Skills** + **Plan** + **Resources** + **Incentives** + **Leadership** = **CHANGE**



RURAL LRTP

RURAL TRANSPORTATION IS CRITICAL TO THE NATION'S ECONOMY



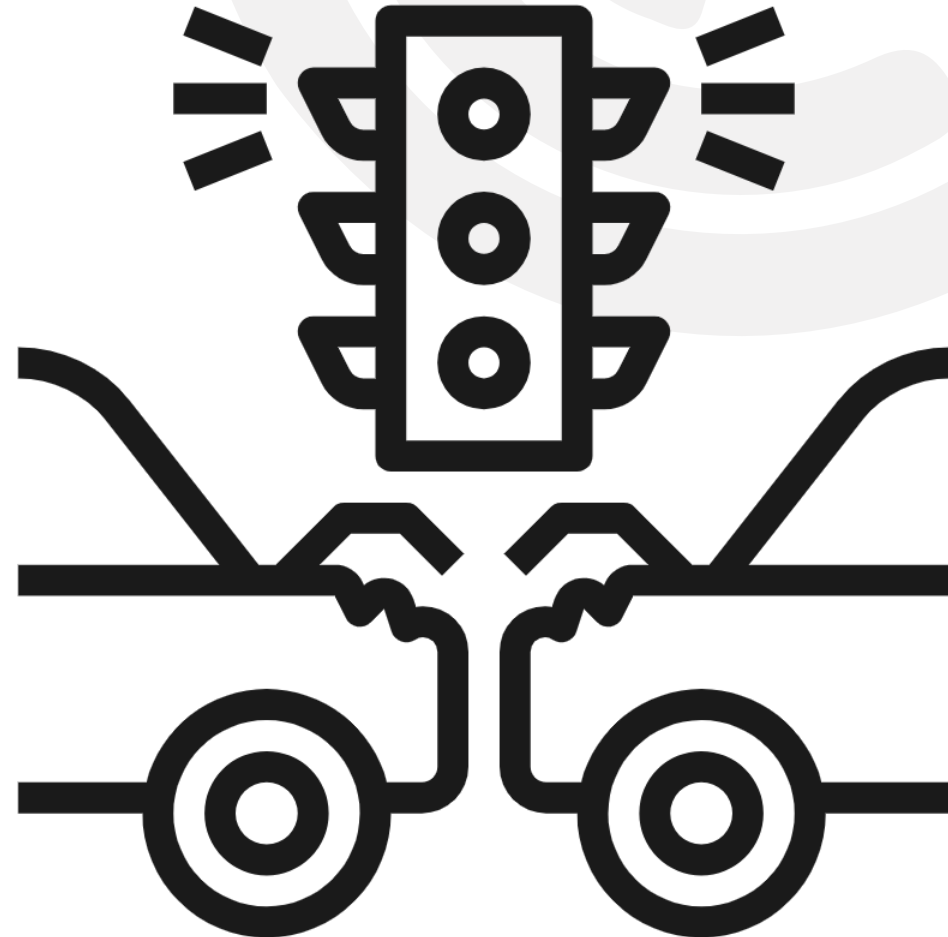
Rural transportation networks are critically important for domestic production and export of agriculture, mining, and energy commodities, as well as the quality of life for all Americans.

Two-thirds of rail freight originates in rural areas, and nearly half of all truck vehicle-miles-traveled (VMT) occur on rural roads. These industries require heavy trucks that create significantly more wear-and-tear on roadways.

Ninety percent of posted (limited weight) bridges are in rural areas and heavy trucks cannot cross posted bridges – to find a safe bridge, heavy trucks hauling in rural areas must traverse three-times the distance as in metro areas.

19% OF AMERICANS LIVE IN RURAL AREAS

- 68% of our nation's total lane-miles are in rural areas
- 45% of roadway fatalities are on rural roads
- 34% public highway-railway crossing fatalities occur on rural roads
- The fatality rate on rural roads is **TWICE** as high as urban roads



URBANIZED AREA LRTP VS. RURAL LRTP

- Urbanized Area LRTP

- Required for every urbanized area over 50,000 population
- Must be updated every 5 years to remain eligible for federal funding
- Must be fiscally constrained
- Example: SIMPO

- Rural LRTP

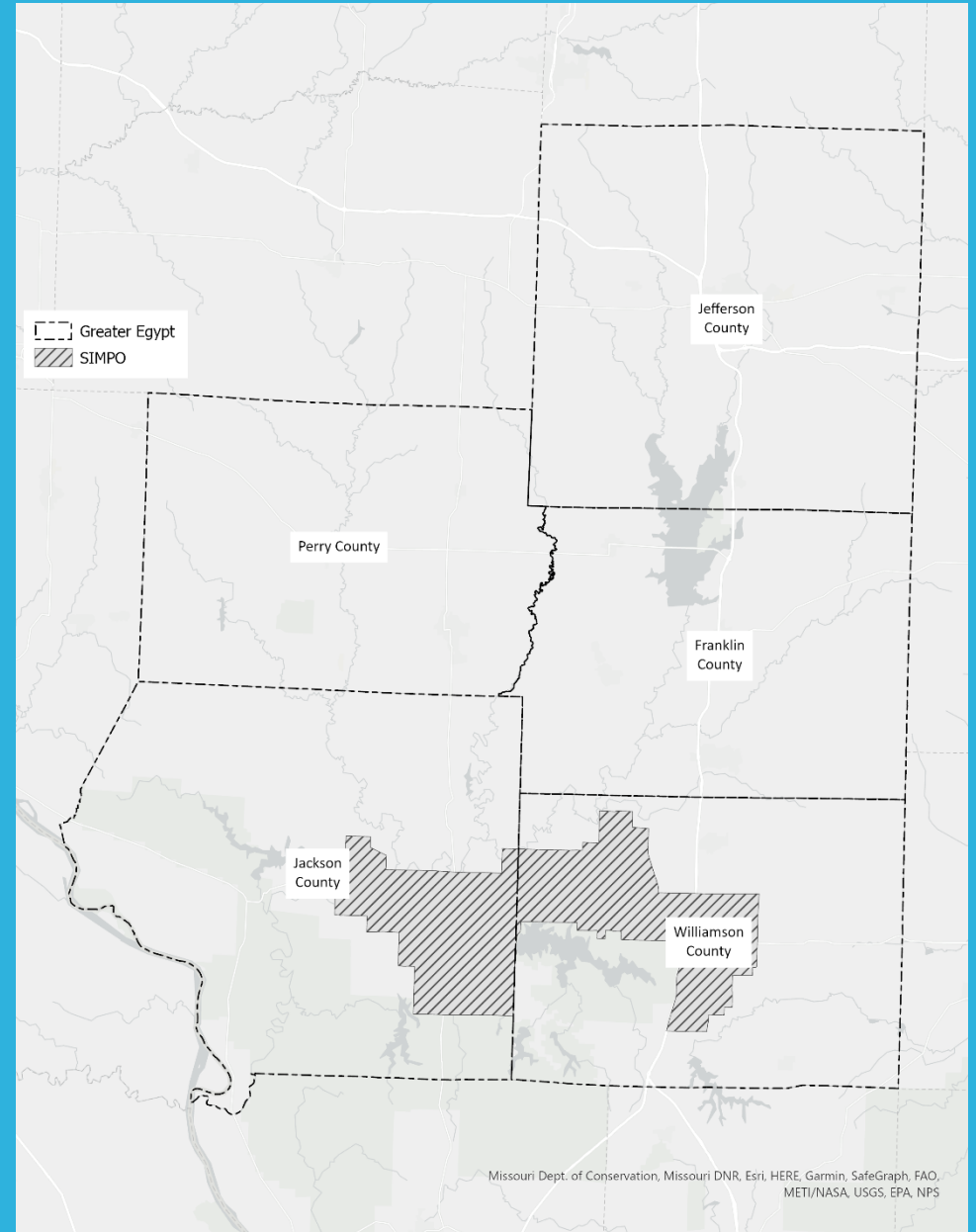
- Not required – However...
 - Must be completed to be designated a Rural Transportation Planning Organization



SCOPE OF WORK

Greater Egypt Long-Range Transportation Plan

- Includes the entire five counties that make up Greater Egypt, excluding the SIMPO Urbanized Area
- Includes modality assessments, as follows:
 - Auto
 - Transit
 - Bicycle
 - Pedestrians
 - Passenger Rail
 - Freight
 - Air Transportation
- Culminates in prioritized project list



SCOPE OF WORK

Existing Conditions Analysis

Task 2: Review of Previous Plan

- Review relevant local, regional, and state level plans

Task 3: Demographic, Employment, and Commuting to Work Assessment

- County level demographic and economic analysis for base year (2019)
- Socio-economic forecast for 2045

Task 4: Land Use and Environmental Considerations

- Evaluate current land use patterns
- Identify environmental considerations

Task 5: Transportation Infrastructure Conditions

- Evaluate existing transportation network including all modes
 - Auto
 - Transit
 - Bike and Pedestrians
 - Passenger rail
 - Freight
 - Air

Task 6: Safety Analysis

- Analyze most recent 5-year crash data

SCOPE OF WORK

Future Conditions Analysis

Task 7: Vision, Goals, Objectives, Strategies, and Performance Measures

- Develop Vision, Goals, Objectives, and Strategies in the context of Tasks 1-6
- Identify measurable outcomes and data sources to track progress

Task 8: Scenario Analysis

- Develop future forecast for baseline and alternative scenario that reflects potential changes in transportation and land use



SCOPE OF WORK

Financial and Implementation Plan

Task 9: Future Transportation Trends and Needs

- Compile list of projects to address future transportation needs

Task 10: Financial Plan

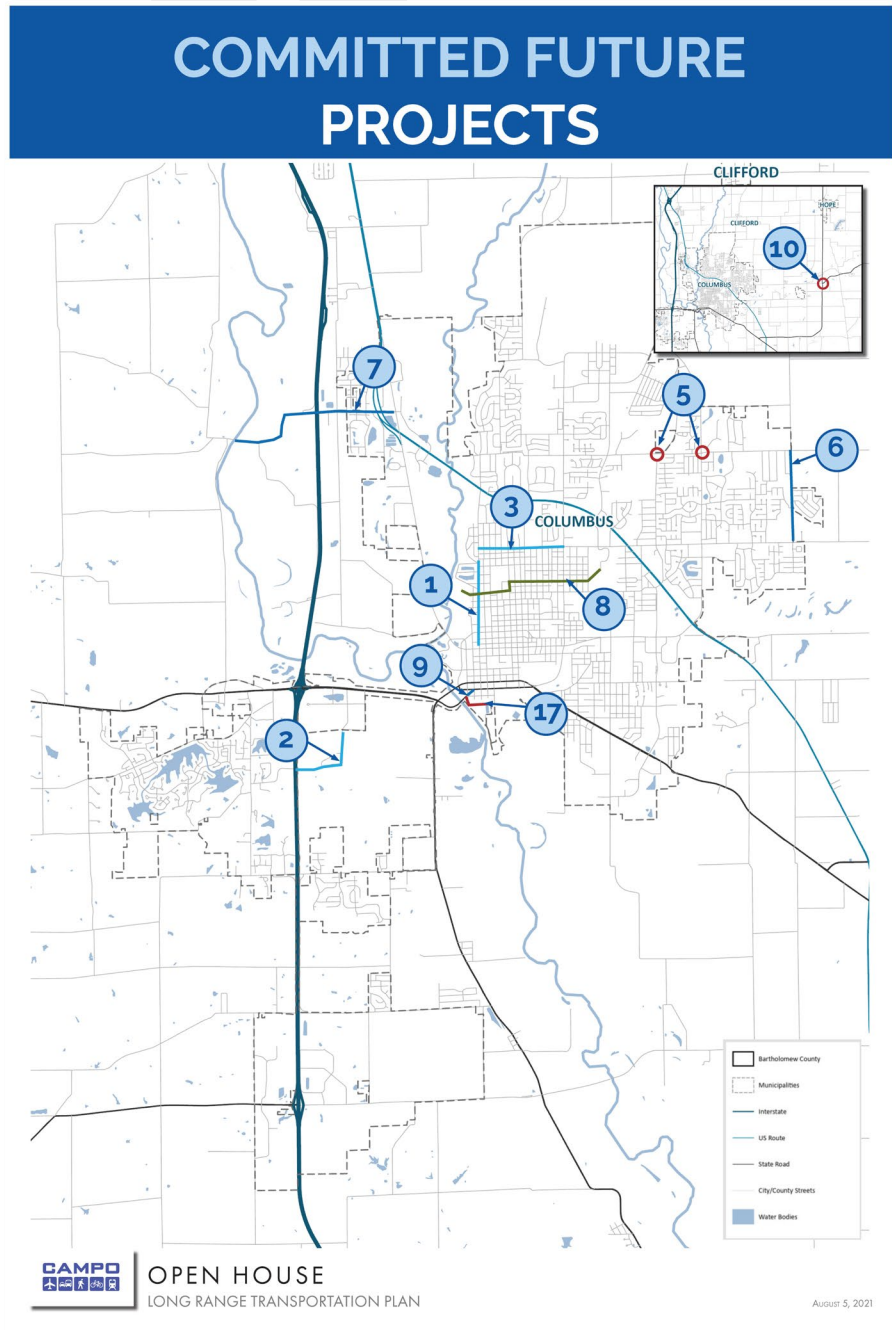
- Identify existing and future federal, state, and local sources of funding to implement list of projects from Task 9

Task 11: Implementation Plan

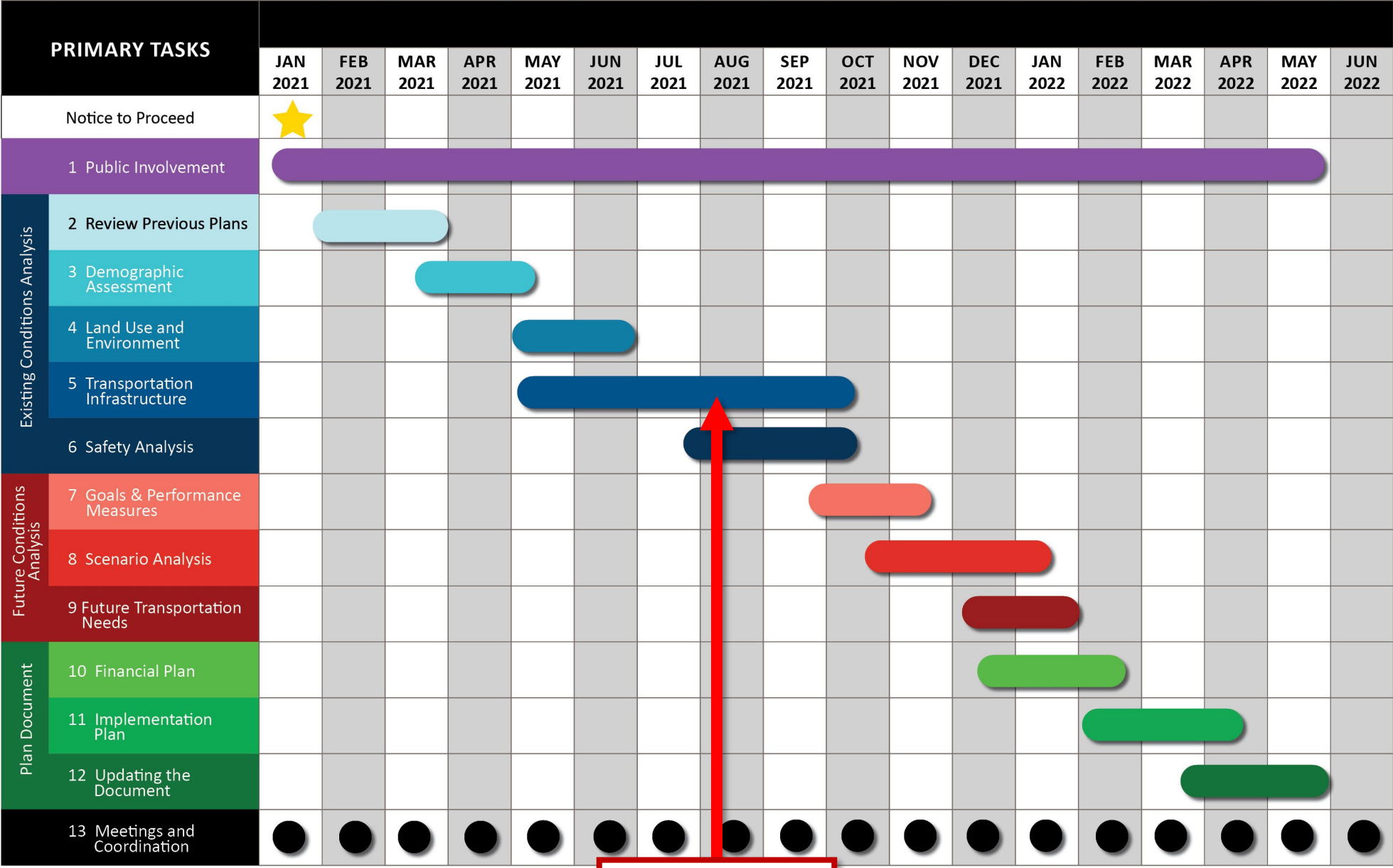
- Develop implementation plan and prioritize projected list to achieve the Region's goals and vision

Task 12: Long Range Transportation Plan Document

- Compile the information in a helpful and easy to use document and submit to Greater Egypt



SCHEDULE



We are Here!



ENGAGEMENT

WHY ENGAGEMENT MATTERS

- Increases the likelihood of success!
- Creates more effective solutions
- Improves citizens' knowledge and skills in problem solving
- Empowers and integrate people from different backgrounds
- Creates local networks of community members
- Creates several opportunities for discussing concerns
- Increases trust in community organizations and governance

ENGAGEMENT APPROACH

- Website, Social Media, Press Releases
- Regional Leaders Roundtable x 2
- Steering Committee x 3
- Survey
- Webmap
- Virtual Community Workshop
- Virtual Open House



- Project Information and Updates
- Resources for Local Leaders
- Community Survey
- Interactive Webmap Tool
- Recording of Public Meetings

HOME DOCUMENTS BACKGROUND

Greater Egypt Long Range Transportation Plan

RECENT SCHEDULE
Early 2021: Plan Kickoff

UPCOMING SCHEDULE
Summer 2021: Advisory Committee Meeting
Late Summer 2021: Public Meeting #1 and Online Survey





REFINE

REGIONAL LEADERS ROUNDTABLE

- July 6 & 7
- Elected Officials & Decision Makers
 - Inform
 - Educate
 - Engage
- Build Support for the Plan
- Craft High Level Guiding Principals



SWOT



STRENGTHS

- Natural Resources (natural lands, waters, and minerals)
- Access to nature
- Access to interstates and major state highways
- Quality higher education
- Spirit of cooperation



WEAKNESSES

- Limited opportunities
- Limited high-speed internet
- High rates of poverty
- Aging population
- Limited access to local/state/federal funding



OPPORTUNITIES

- Increase tourism
- Increase access to outdoor recreation
- Remote work/telework
- Enhanced freight and logistics
- Availability of land and workforce



THREATS

- Job loss
- Loss of anchor institutions/industries
- Illinois political/economic climate
- Climate change/extreme weather
- Population decline (particularly young adults)



GREATER EGYPT'S VISION

- Picture Greater Egypt in 2045
- What does the future look like?
- What is different from today?
- What remains the same?



OPTION 1

- The Greater Egypt Region will be known as a land of opportunity, a strong region with a vibrant economy and pristine natural environment that make it a choice destination to live, grow, and prosper.



OPTION 2

- Greater Egypt will be known as a welcoming destination that values and celebrates its natural assets and a resilient region where everyone has access to opportunities and a high quality of life.



OPTION 3

- Greater Egypt will be known as a prosperous region where businesses and families thrive, success is rooted in collaboration, and all our residents have access to healthy, active living.



OPTION 4

- The Greater Egypt Region will become a thriving, economically diverse environment for business and industry with a growing population, labor force, per capita income and expanding tax base, while maintaining a high quality of life and place.





GOALS

FEDERAL LRTP GOALS

- Safety
- Infrastructure Condition
- Congestion Reduction
- System Reliability
- Freight Movement and Economic Vitality
- Environmental Sustainability
- Reduce Project Delivery Delays

ILLINOIS LRTP Goals

- Economy
- Livability
- Mobility
- Resiliency
- Stewardship



SIMPO LRTP GOALS

- Support Economic Vitality and Quality of Life
- Encourage Transportation Choices
- Maintain a Safe Transportation System
- Preserve the Existing Transportation System
- Foster Coordination Throughout the MPA



DRAFT GOALS



- Increase transportation safety
- Increase access to opportunities
- Increase quality of life
- Increase financial sustainability
- Support active/healthy living
- Preserve natural resources
- Increase economic resilience



NEXT STEPS

WHERE DO WE GO FROM HERE?

NEXT STEPS

- **September: Virtual Public Workshop #1 + Community Survey**
 - Introduce the project
 - Validate the Vision and Goals
 - Refine Priority Areas
 - Generate New Ideas and Solutions
- **Webmap**
 - <https://arcgis.lochgroup.com/portal/apps/webappviewer/index.html?id=917c3eba980245fcbb206bc86f8ffb51>





THANK YOU



KSHACKELFORD@LOCHMUELLER.COM



DRIECHMANN@LOCHMUELLER.COM



WWW.GREATEREGYPTTRANSPORTATIONPLAN.COM