

# GREATER EGYPT LONG RANGE TRANSPORTATION PLAN

---

STEERING COMMITTEE MEETING #2

OCTOBER 18, 2021



# AGENDA

- Welcome and Introductions
- Progress Report
- Public Engagement Update
- Performance Management
- Goals + Objectives
- Call for Projects
- Q&A
- Next Steps



# GREATER EGYPT REGIONAL PLANNING AND DEVELOPMENT COMMISSION



- Joe Zdankiewicz, Director of Transportation Planning



- Cary Minnis, Executive Director



# THE TEAM



- Dustin Riechmann, PE, PTOE



- Katy Shackelford, AICP, PTP



- Peter Williams, AICP



- Stephen Ibendahl, AICP, ASLA



- Brian Ziegler, PE

# STEERING COMMITTEE



Jackson County Engineer	Mitch Burdick, P.E.
Franklin County Engineer	Michael A. Rolla, P.E.
Williamson County Engineer	Travis Emory, P.E.
Jefferson County Engineer	Brandon Simmons
Perry County Engineer	Brian Otten
RIDES	Adam Lach
SCMT	Randy Barrow
Jackson County Transit	Shawn Freeman
IDOT Local Roads	Doug Helfrich
MTC-SIWDB	Kathy Lively
Mt. Vernon Airport	Chris Collins
Veterans Airport	Doug Kimmel
Southern Illinois Airport	Gary Shafer
Economic Development	Jennifer Olson
SI NOW	Sarah Gray
Ride Illinois	Grant R. Miller
Farm Bureau	Bruce Rodely
Corps Engineers	Tyson Zobrist
Street Commission, Benton	Lee Messersmith
Mt. Vernon Public Works Director	Brad Ruble

# YOUR ROLE

- Focus on the **FUTURE** of Greater Egypt
- **YOU** are the expert, share your knowledge
- Research issues, bring us your ideas, be educated advocates
- Educate and inform your neighbors about the plan and its process
- Encourage others to get involved and share their ideas



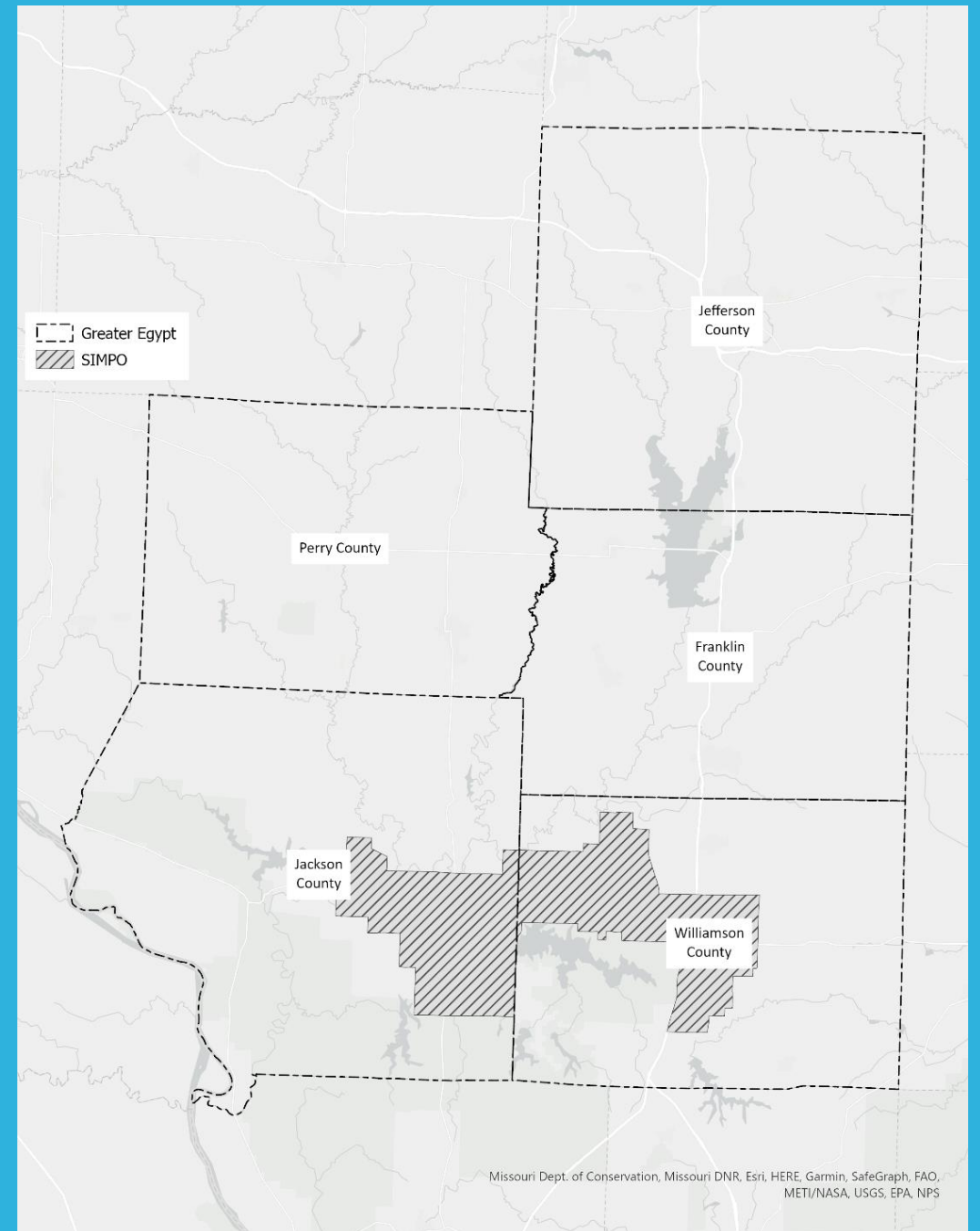


# PROGRESS REPORT

---

# Greater Egypt Long-Range Transportation Plan

- Includes the entire five counties that make up Greater Egypt, excluding the SIMPO Urbanized Area
- Includes modality assessments, as follows:
  - Auto
  - Transit
  - Bicycle
  - Pedestrians
  - Passenger Rail
  - Freight
  - Air Transportation
- Culminates in prioritized project list





# PROGRESS REPORT

## Existing Conditions Analysis



### Task 2: Review of Previous Plan

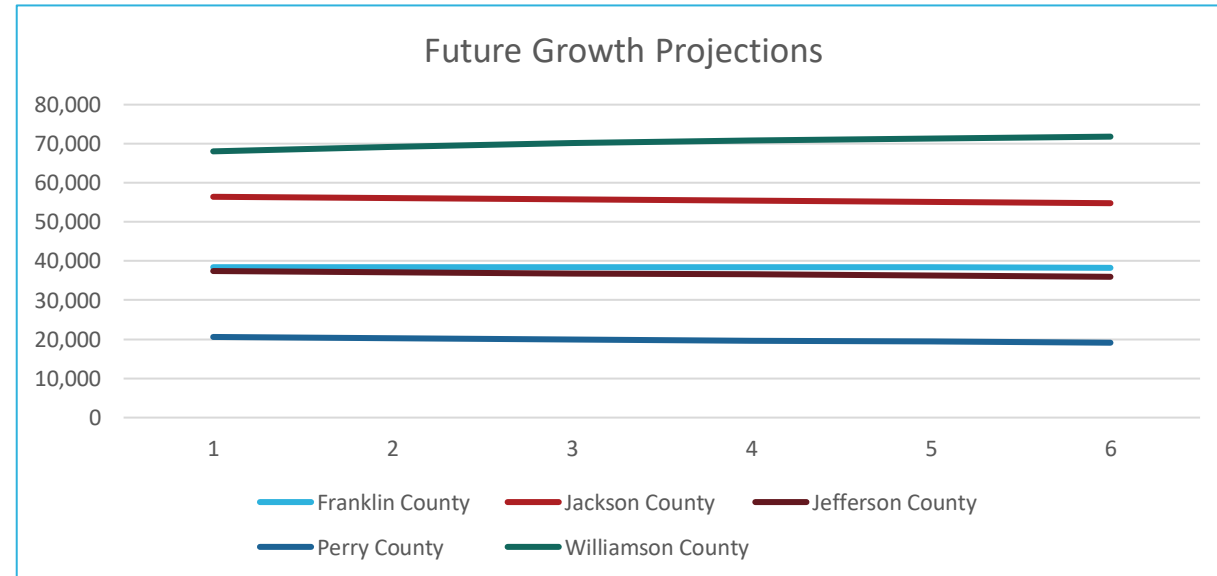
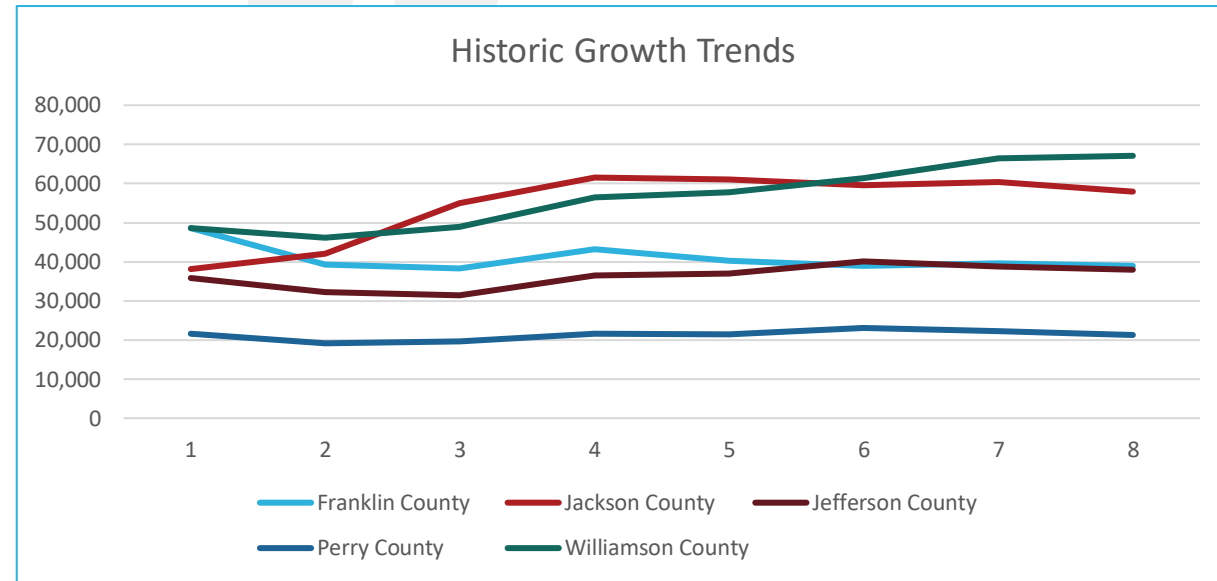
- Review relevant local, regional, and state level plans

- SIMPO Long Range Transportation Plan
- Human Services Transportation Plan
- Greater Egypt Workforce Transit Study
- Greater Egypt Safety Plan
- Greater Egypt Freight Plan
- Greater Egypt Comprehensive Economic Development Strategy
- All Countywide Hazard Mitigation Plans
- Greenways and Trails Plan for Jackson County
- Mt. Vernon Comprehensive Plan
- IDOT Long Range Transportation Plan
- Illinois Bike Transportation Plan
- Illinois State Freight Plan
- Freight Mobility Plan
- IDOT ITS Strategic Plan
- Illinois State Rail Plan Update
- Illinois State Transit Plan
- Illinois Marine Transportation System Plan and Economic Impact Analysis Study
- All Hazards Transportation System Vulnerability Assessment

# PROGRESS REPORT

## ✓ Existing Conditions Analysis

- ✓ Task 2: Review of Previous Plan
  - Review relevant local, regional, and state level plans
- ✓ Task 3: Demographic, Employment, and Commuting to Work Assessment
  - County level demographic and economic analysis for base year (2019)
  - Socio-economic forecast for 2045



# PROGRESS REPORT

## ✓ Existing Conditions Analysis

- ✓ Task 2: Review of Previous Plan
  - Review relevant local, regional, and state level plans
- ✓ Task 3: Demographic, Employment, and Commuting to Work Assessment
  - County level demographic and economic analysis for base year (2019)
  - Socio-economic forecast for 2045
- ✓ Task 4: Land Use and Environmental Considerations
  - Evaluate current land use patterns
  - Identify environmental considerations

# LAND USE AND ENVIRONMENT

## Land Cover

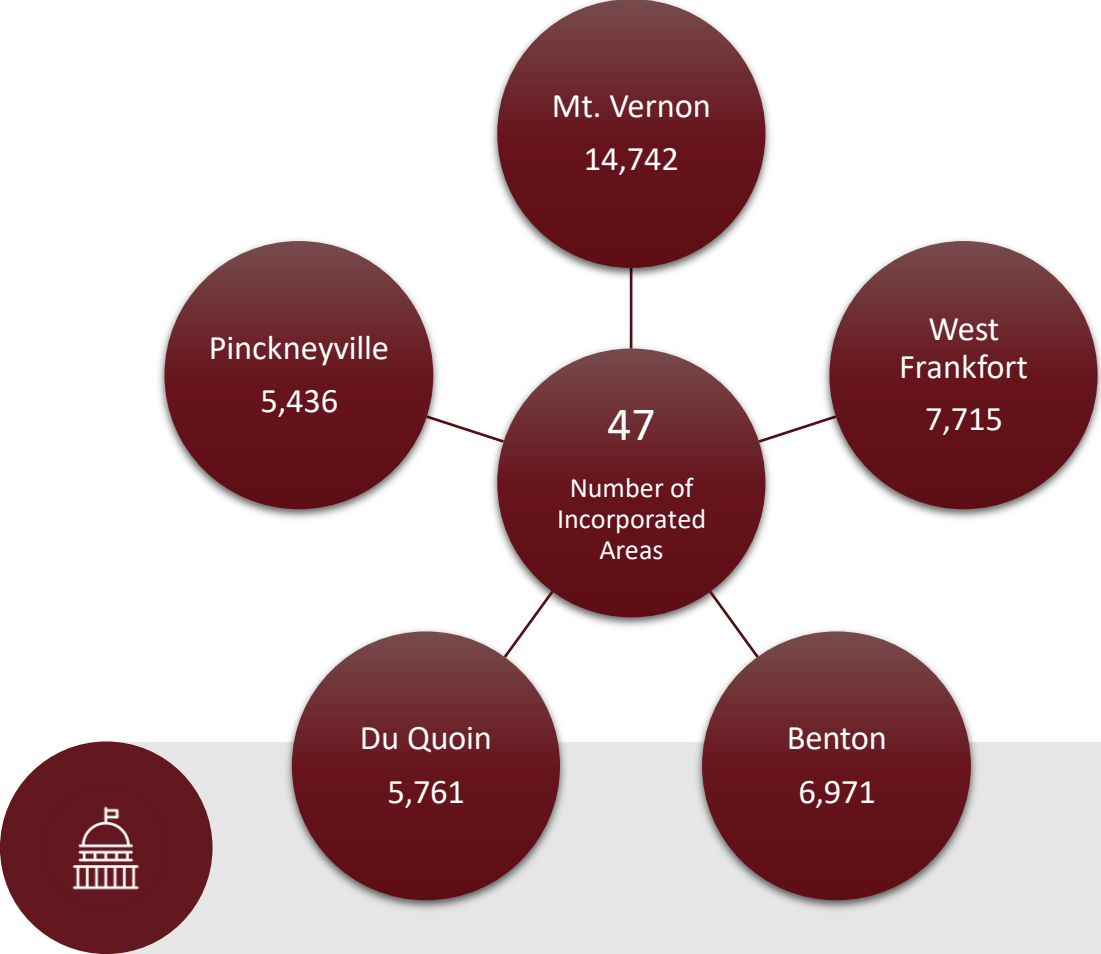
- 34.5% Cultivated Crops
- 26% Deciduous Forest
- 17.3% Hay/Pasture

## Protected Land

250 Square Miles of Protected Land

## Water Quality

85% of Assessed Water Bodies are Impaired



# PROGRESS REPORT

## ✓ Existing Conditions Analysis

### ✓ Task 2: Review of Previous Plan

- Review relevant local, regional, and state level plans

### ✓ Task 3: Demographic, Employment, and Commuting to Work Assessment

- County level demographic and economic analysis for base year (2019)
- Socio-economic forecast for 2045

### ✓ Task 4: Land Use and Environmental Considerations

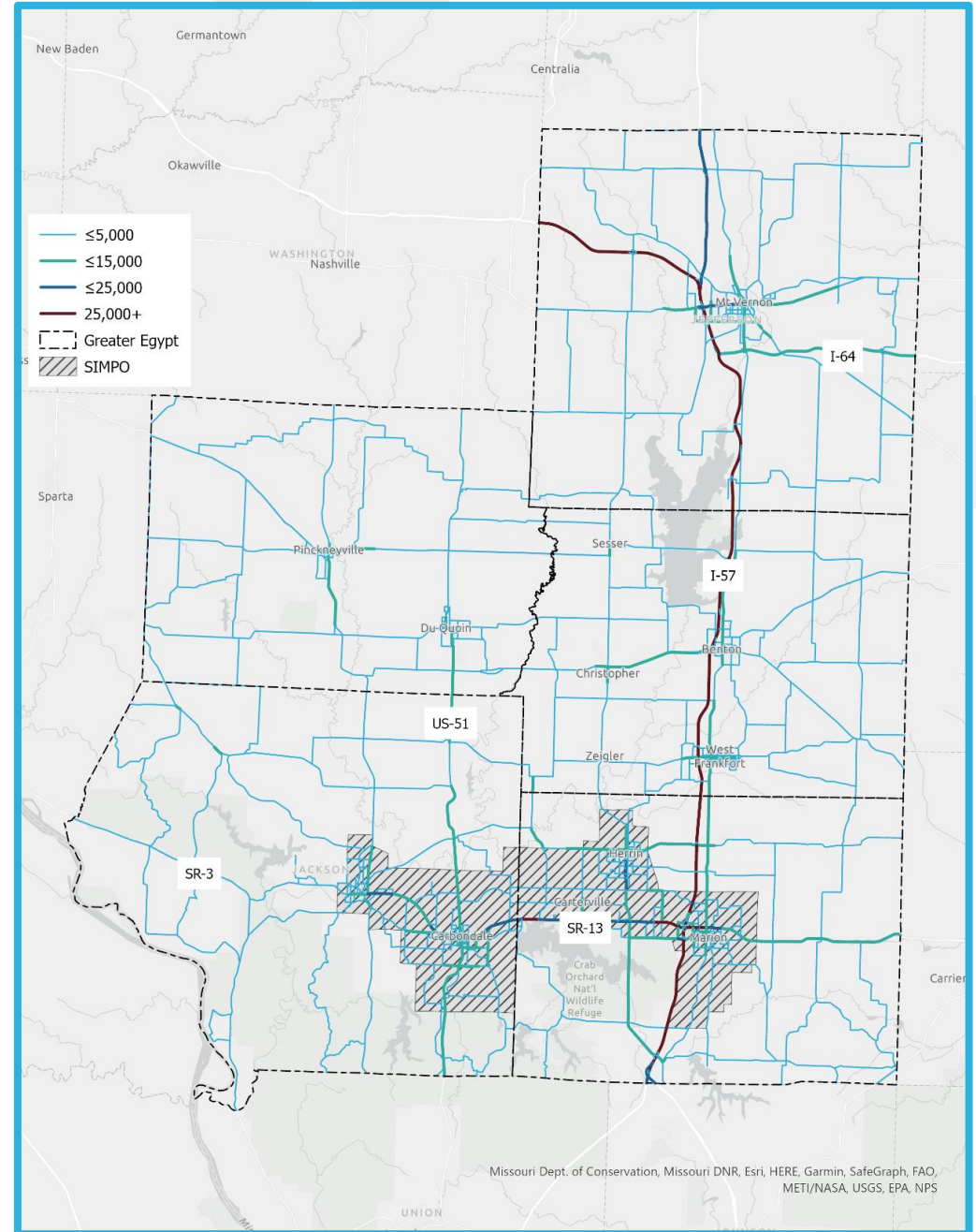
- Evaluate current land use patterns
- Identify environmental considerations

### ✓ Task 5: Transportation Infrastructure Conditions

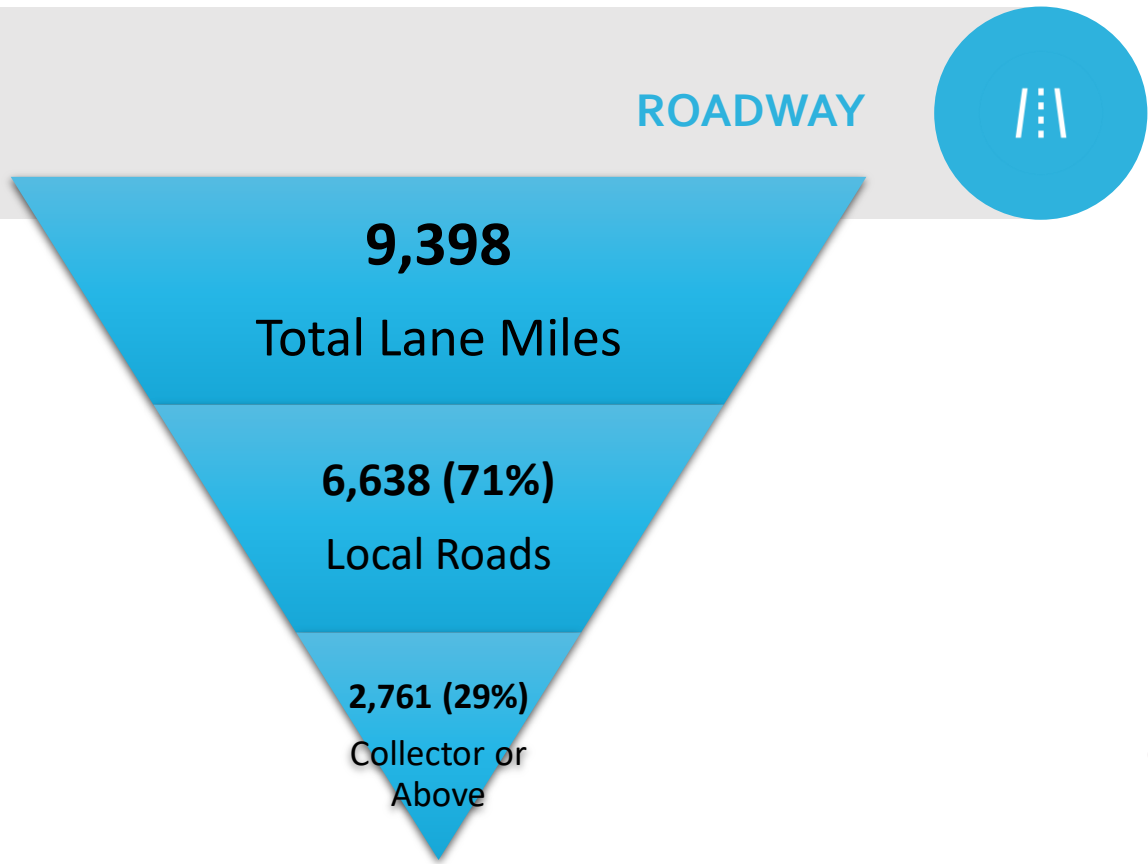
- Evaluate existing transportation network including all modes
  - Auto
  - Transit
  - Bike and Pedestrians
  - Passenger rail
  - Freight
  - Air

# TRANSPORTATION SYSTEM

- 2 Interstates
  - I-64
  - I-57
- 1 US Route
  - US 51
- 8 State Routes



# TRANSPORTATION SYSTEM



Rend Lake Bike Trail, 20+ miles

Perkins Ave. Bike Lane (Mt. Vernon), 1 mile

S 34<sup>th</sup> St. Bike Lane (Mt. Vernon), 1 mile



**WALKING AND BIKING**



# TRANSPORTATION SYSTEM

## TRANSIT



Jackson County  
Mass Transit  
District

93,691  
Annual Trips

Rides Mass  
Transit District

1,119,285  
Annual Trips

South Central  
Illinois Mass  
Transit District

539,786  
Annual Trips

Amtrak

36,681  
Annual Trips

Demand is growing across the region.

National Freight  
Network

90 Miles of  
Roadway

Class I Railroads

4 of 7 Class I  
Railroads

585 Rail Miles

Short Line  
Railroads

Evansville  
Western  
Railway

40 Rail Miles



## FREIGHT





# PROGRESS REPORT

## ✓ Existing Conditions Analysis

### ✓ Task 2: Review of Previous Plan

- Review relevant local, regional, and state level plans

### ✓ Task 3: Demographic, Employment, and Commuting to Work Assessment

- County level demographic and economic analysis for base year (2019)
- Socio-economic forecast for 2045

### ✓ Task 4: Land Use and Environmental Considerations

- Evaluate current land use patterns
- Identify environmental considerations

### ✓ Task 5: Transportation Infrastructure Conditions

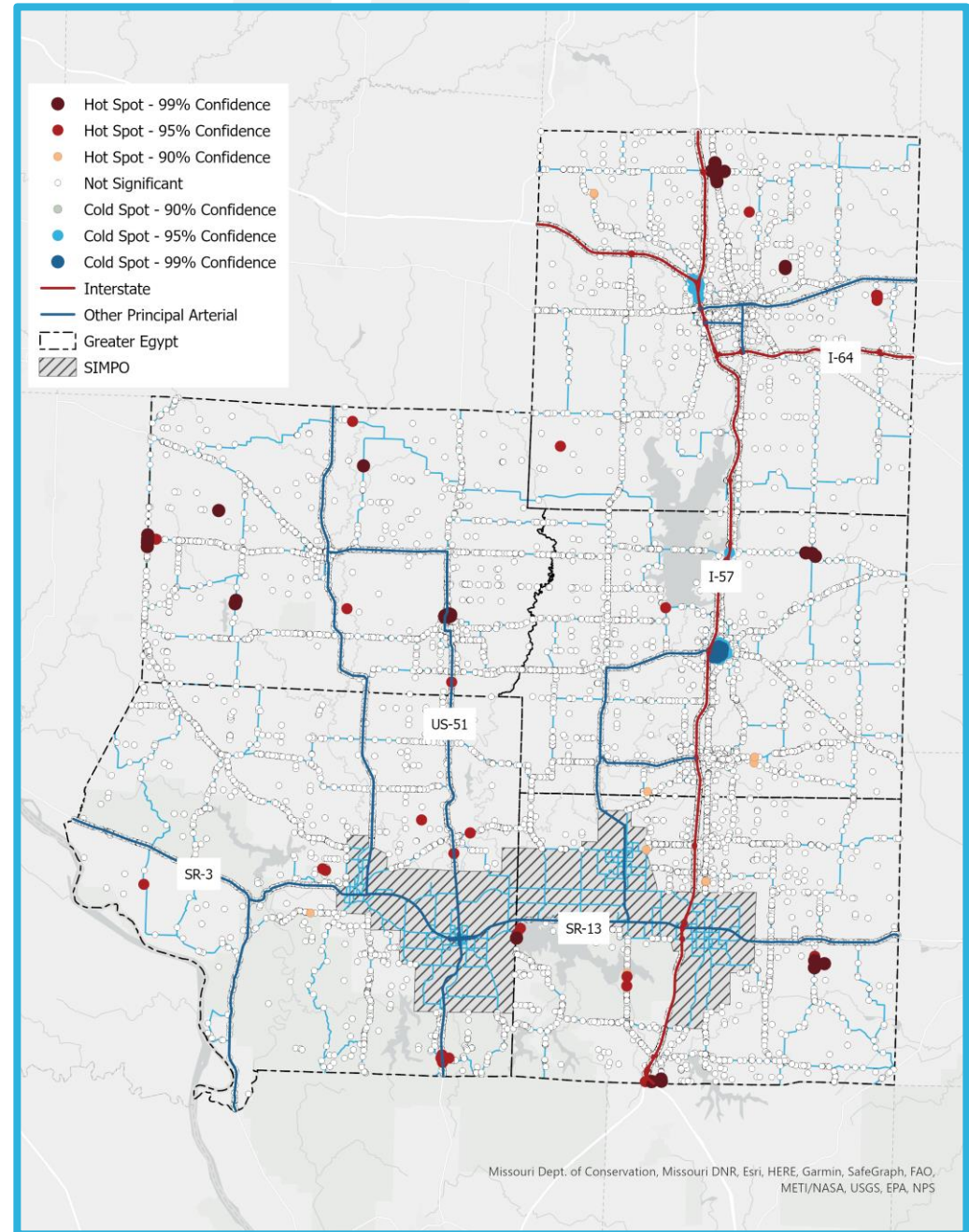
- Evaluate existing transportation network including all modes
  - Auto
  - Transit
  - Bike and Pedestrians
  - Passenger rail
  - Freight
  - Air

### ✓ Task 6: Safety Analysis

- Analyze most recent 5-year crash data

# TRANSPORTATION SAFETY

- High Severity Crash Clusters
  - Jefferson County –
    - E South Street & N/S Main Street
  - Perry County –
    - US-51/Hickory Street & N Hickory Street
    - SR-154 & County Line Road
  - Franklin County –
    - 1800 E & 1550 N/Ewing Road
  - Jackson County –
    - US-51 & Old US 51/Makanda Road



# NEXT STEPS

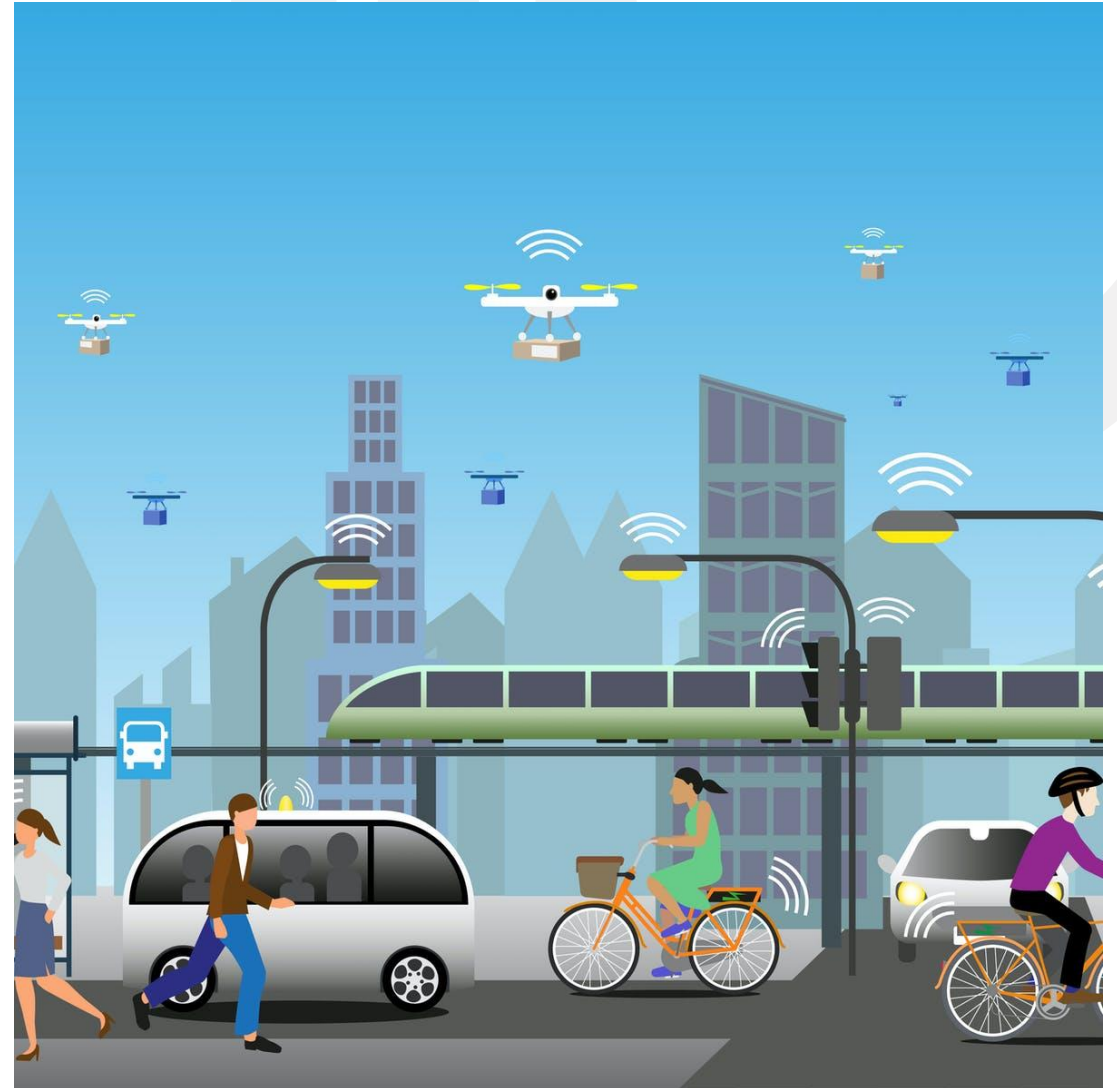
## Future Conditions Analysis

### Task 7: Vision, Goals, Objectives, Strategies, and Performance Measures

- Develop Vision, Goals, Objectives, and Strategies in the context of Tasks 1-6
- Identify measurable outcomes and data sources to track progress

### Task 8: Scenario Analysis

- Develop future forecast for baseline and alternative scenario that reflects potential changes in transportation and land use



# FINAL STEPS

## Financial and Implementation Plan

### Task 9: Future Transportation Trends and Needs

- Compile list of projects to address future transportation needs

### Task 10: Financial Plan

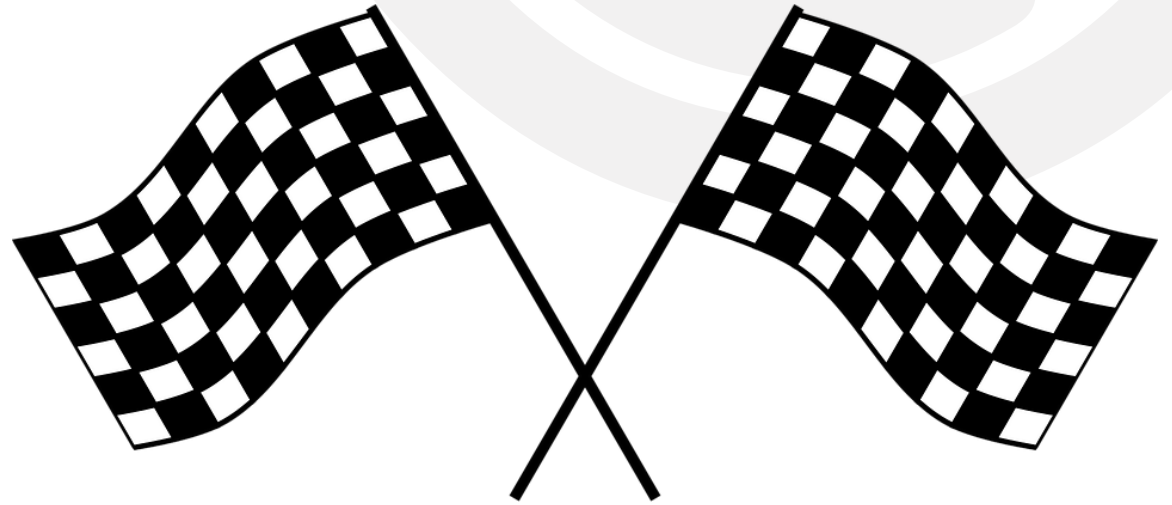
- Identify existing and future federal, state, and local sources of funding to implement list of projects from Task 9

### Task 11: Implementation Plan

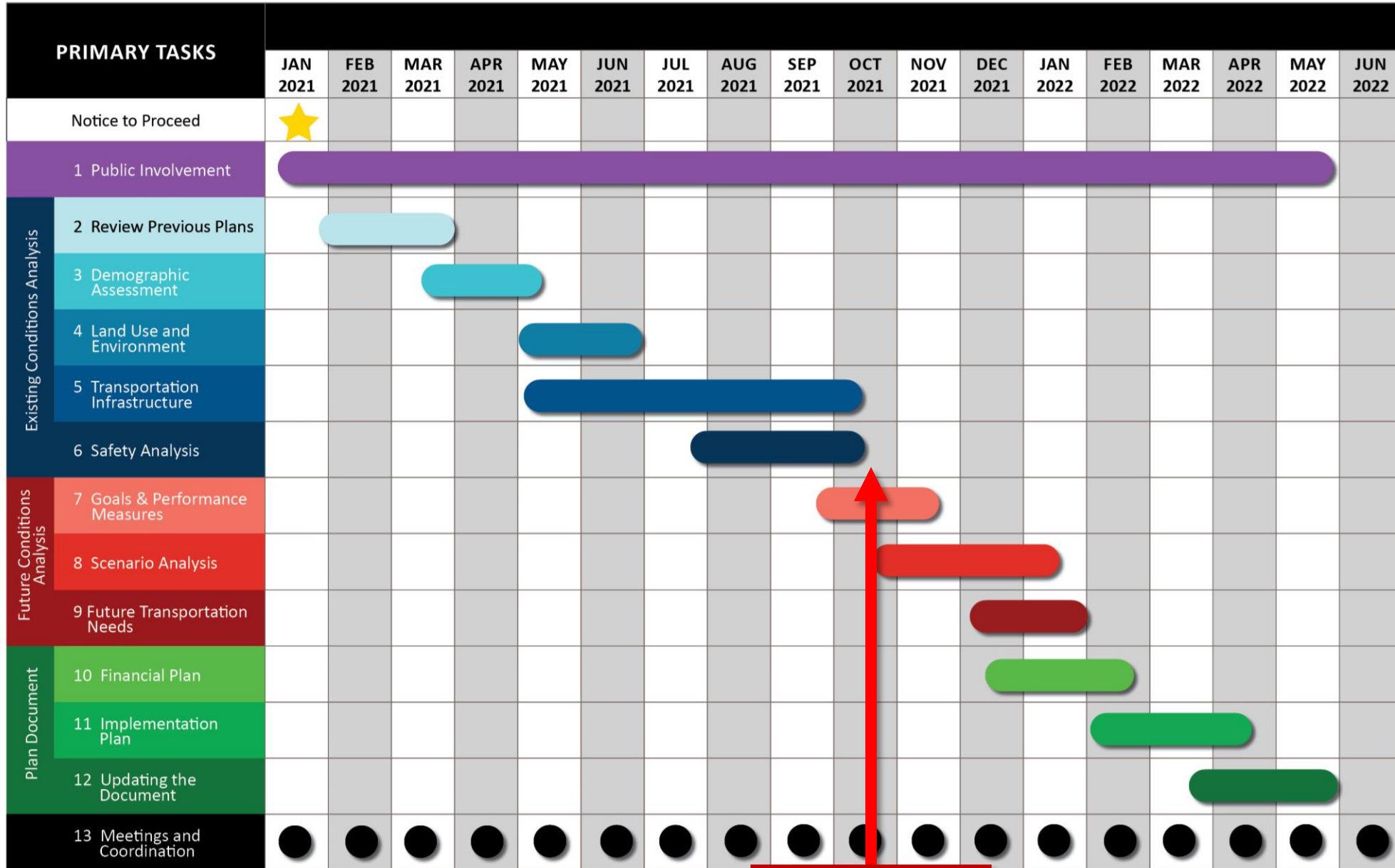
- Develop implementation plan and prioritize projected list to achieve the Region's goals and vision

### Task 12: Long Range Transportation Plan Document

- Compile the information in a helpful and easy to use document and submit to Greater Egypt



# SCHEDULE



We are Here!



# ENGAGEMENT

---

# SEPTEMBER 15 VIRTUAL WORKSHOPS

- Live webinars at Noon and 7:00pm
- If someone missed it - recordings available at [www.GreaterEgyptTransportationPlan.org](http://www.GreaterEgyptTransportationPlan.org)

September 15th Public Workshop - Greater Egypt Long Range Transportation Plan

## GREATER EGYPT REGIONAL PLANNING AND DEVELOPMENT COMMISSION



- Joe Zdankiewicz, Director of Transportation Planning
- Cary Minnis, Executive Director

4:10 / 1:01:01

LOCHMUELLER GROUP | The i5 Group | CLARIDA & ZIEGLER ENGINEERING CO. | Scroll for details



# SURVEY - OPEN UNTIL OCTOBER 31ST

- 131 Responses (as of 10/13)
- Small “boosted” Facebook post (4,195 reach)
- Continue to share with your networks and colleagues!

## GREATER EGYPT LONG RANGE TRANSPORTATION PLAN



# Survey Now Open!

**Take it Today!**  
**It only takes 8-10 minutes!**

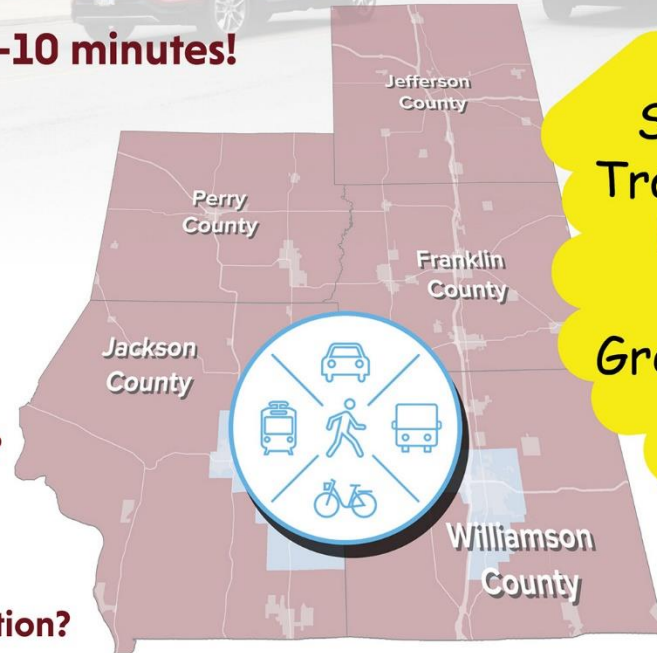
Share Your  
Transportation  
Priorities  
for  
Greater Egypt!

**Increased safety?**

**New routes?**

**Reduced congestion?**

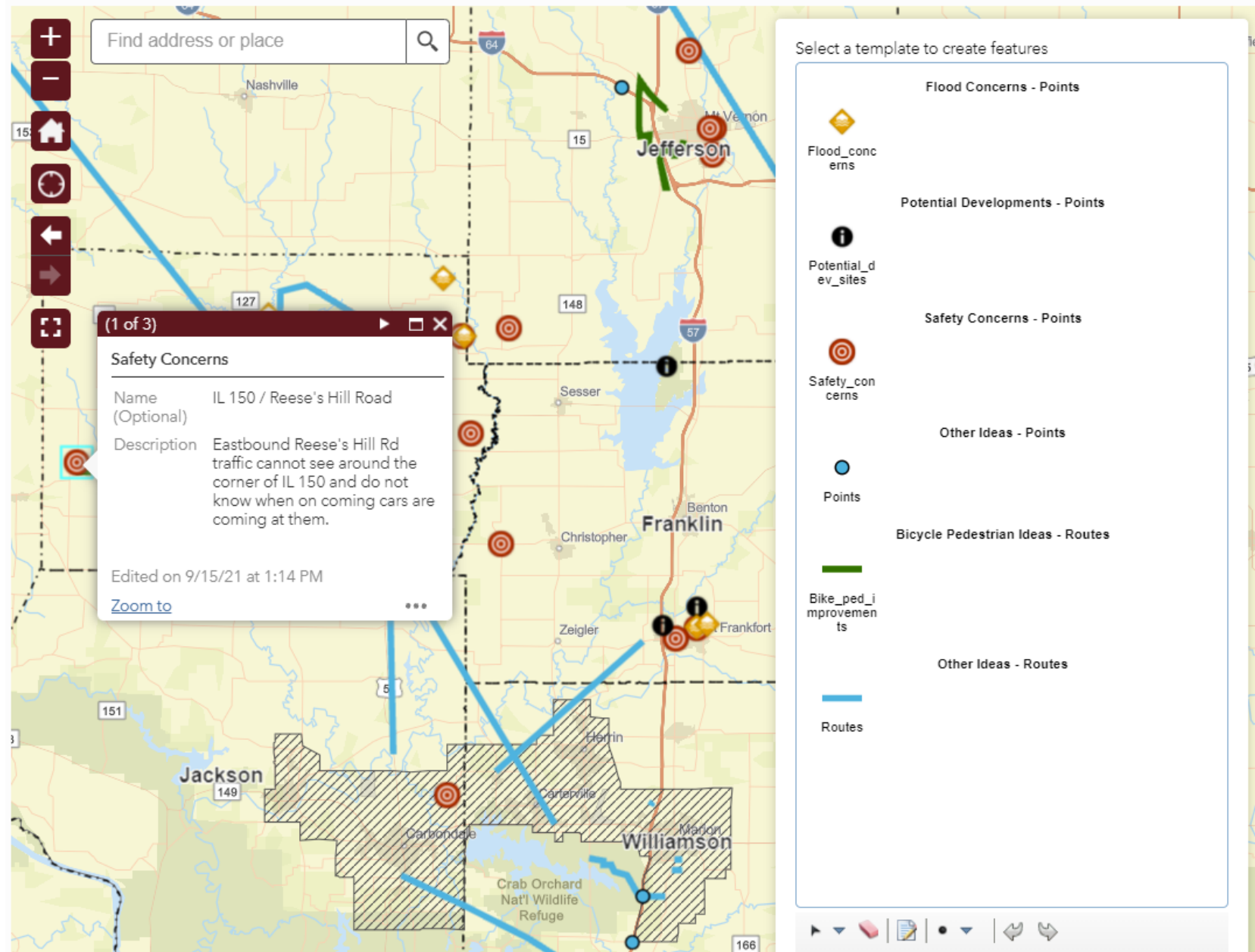
**More transportation choices?**



[www.GreaterEgyptTransportationPlan.org](http://www.GreaterEgyptTransportationPlan.org)



# MAPPING TOOL STILL AVAILABLE



# ENGAGEMENT – NEXT STEPS

- Survey Results in November
- Late Winter/Spring 2022: Virtual Public Meeting #2



Take a look at the ongoing progress toward our enterprise objectives. Good data drives great results.

# PERFORMANCE MANAGEMENT

### OneNetwork

FY18 GOAL: One Network in three small (EOE, HED, LWD) and one larger (EOPSS, DOT) secretariat

**EOE successfully cut over to OneNetwork.**  
HED on track for January.

### Data Policy

FY18 GOAL: One major data study that we drive

**1**  
new data study on opioid crisis with DPH almost complete

### Office 365

FY18 GOAL: Migrate 20K mailboxes to O365

**5,338**  
mailboxes migrated

### Telecom

FY18 GOAL: Operationalize centralized data/telecom spend management

**\$3.81M**  
in savings realized

### Desktop Support

FY18 GOAL: Centralized desktop support in 3-4 Secretariats (ANF, EOE, HED, LWD)

Centralized desktop support for **1 secretariat.** **+4,000 end users** now supported by the TSS Service Desk.

### Security

FY18 GOAL: No domains with 6 or more admins

**80%**  
of domains have 5 or fewer admins

**16**  
domain admins under MFA

### Desktop Modernization

FY18 GOAL: Centralize procurement of commodity desktop hardware

**2,798**  
devices to be purchased

### Digital Services

FY18 GOAL: Have 80% of traffic served by new Mass.gov pages

**24.54%**  
Goal: < 20%

THOUGHT TO YOU BY THE EXECUTIVE OFFICE OF

# PERFORMANCE MANAGEMENT

- As of May 27, 2018, performance areas and their targets must be addressed in the LRTP and the TIP
- US DOT has established performance measures for four categories:
  - Safety
  - Pavement and Bridge Condition
  - System Performance
  - Transit Assets Management



# HOW TO SET YOUR TARGETS?

- Support the State's Targets
- Set independent targets that are equal to or stricter than the State's
- NOTE: SIMPO has chosen to adopt the State's targets



# SAFETY

- Analyze the 5-year rolling averages of safety data, 2% annual reduction of the five-year rolling average

Performance Measures	Approach to Target Setting
Number of Fatalities	2% annual reduction
Rate of Fatalities per 100M VMT*	2% annual reduction
Number of Serious Injuries	2% annual reduction
Rate of Serious Injuries per 100M VMT*	2% annual reduction
Number of Non-Motorized Fatalities and Serious Injuries	2% annual reduction

\*Using IDOT official Countywide VMT, cannot be disaggregated below the County level

# SAFETY

Measure	Baseline 2016-2020 (5-year average)	Target
Number of Fatalities	28.4	2% reduction per year
Number of Bike/Ped Fatalities and Serious Injuries	20.4	2% reduction per year
Number of Series Injuries**	125	2% reduction per year
Rate of Fatalities per 100 million VMT	1.43	0.94
Rate of Serious Injuries per 100 million VMT**	7.67	11.27

# PAVEMENT AND BRIDGE CONDITION

Performance Measures	2022 Target
Percent of Interstate Pavement in Good condition	65%
Percent of Interstate Pavements in Poor condition	4.9%
Percent of non-Interstate NHS pavement in Good Condition	27%
Percent of non-Interstate NHS pavement in Poor Condition	6%
Percent of NHS bridges classified as in Good condition	27%
Percent of NHS bridges classified in Poor condition**	14%

\*\* If the state does not reach a target of 10%, it will be required to set aside funds



# PAVEMENT AND BRIDGE CONDITION

Measure	Baseline	2022 Target
Percent of Interstate Pavement in Good Condition	52.2% (in excellent condition)	65%
Percent of Interstate Pavement in Poor Condition	0%	<4.9%
Percent of Non-Interstate NHS Pavement in Good Condition	11.6% (in excellent condition)	27%
Percent of Non-Interstate NHS Pavement in Poor Condition	24.2%	6%
Percent of NHS Bridges Classified as in Good Condition	37/126 = 29%	27%
Percent of NHS Bridges Classified as in Poor Condition	17/126 = 14%	14%

# SYSTEM PERFORMANCE

- IDOT has procured the Regional Integrated Transportation Information System (RITIS) to analyze the National Performance Management Research Dataset (NPMRDS).
- IDOT has provided access to RITIS for the MPOs within the state to use.

Performance Measures	Approach to Target Setting
Percent of person-miles traveled on the Interstate System that are reliable	RITIS
Percent of person0miles traveled on the non-Interstate NHS that are reliable	RITIS
Truck Travel Time Reliability Index	RITIS

# TRANSIT ASSET MANAGEMENT

- RIDES, Jackson County MTD, and South-Central Transit (Long Tripper)
- Shawnee MTD (Short Tripper)

Asset Type	Definition
Facilities	The percentage of facilities within an asset class and for which agencies have capital rehab and replacement responsibility, rated below condition 3 on the FTA TERM scale
Rolling Stock (Revenue Vehicles)	The percentage of revenue vehicles by asset class that either meet or exceeded their Useful Life Benchmark (ULB)
Equipment (Service Vehicles)	The percentage of non-revenue, support-service, and maintenance vehicles that either meet or exceed their ULB

# TRANSIT ASSET MANAGEMENT

Performance Metric	# of Vehicles at or Beyond ULB	Total Vehicles	% of Vehicles at or Beyond ULB (statewide)	Target
Rolling Stock	185	402	46% (48%)	TBD
Equipment	22	31	71% (50%)	TBD

Performance Metric	# of Facilities Rated at 3.0 or Below	Total Facilities	% of Facilities Rated at 3.0 or Below (statewide)	Target
Facilities	0*	11	0% (16%)	TBD

\*condition assessments for 2 facilities are not available

# ADDITIONAL PERFORMANCE MANAGEMENT

- Airport – Percent of runway pavement rated as “good” or better
- Aviation – Number of landing areas inspected
- Bridges/Highway Construction-- Percent of IL Interstates NHS bridges, non interstates NHS bridges in acceptable maintenance conditions, % of state construction projects accomplished
- Cycle Rider Safety Training – Percent of motorcycle fatalities (per 100 M VMT), total number of motorcycle riders trained
- High Speed Rail -- Percent of high-speed rail upgrades complete
- Highway Maintenance – Roadway condition rating percent acceptable
- Improve Rail Infrastructure -- Percent of programmed projects under contract
- Port Improvement Program – Number of projects
- Promote/Enforce Highway Safety – Safety belt usage rate, Total fatality rate 100M VMT
- Promote/Enforce Motor Carrier Safety – Total Number of Commercial Motor Vehicle-related fatal crashes
- Support Local Highway System– Percent of local program construction projects accomplished
- Support Passenger Rail – Amtrack on-time percentage, overall amtrack ridership
- Support/Enhance Downstate Public Transit – Bus ridership



# GOALS + OBJECTIVES

---

# THE VISION

The Greater Egypt Region will be known as a land of opportunity, a strong region with a vibrant economy and pristine natural environment that make it a choice destination to live, grow, and prosper.

# REVIEW OF GOALS

1. Increase transportation safety
2. Increase access to opportunities
3. Increase quality of life
4. Increase financial sustainability
5. Support active/healthy living
6. Preserve natural resources
7. Increase economic resilience





# DRAFT OBJECTIVES



## 1. Increase transportation safety

1. Reduce the number of fatal & severe injury crashes
2. Improve safety on pedestrian & bicycle facilities
3. Improve safety for at-grade rail crossings

# DRAFT OBJECTIVES



## 2. Increase access to opportunities

1. Support improved transportation options for regional workforce
2. Support easy access to healthcare providers
3. Support improved multi-modal access to educational facilities

# DRAFT OBJECTIVES



## 3. Increase quality of life

1. Support financially sustainable transportation system expansion
2. Expand & improve the pedestrian facility network
3. Expand & improve the bicycle facility network

# DRAFT OBJECTIVES



## 4. Increase financial sustainability

1. Enhance coordination between regional stakeholders to maximize funding opportunities
2. Minimize the impact of transportation investment on taxpayers and local governments
3. Support financially responsible transportation system expansion
4. Encourage development in areas with existing infrastructure

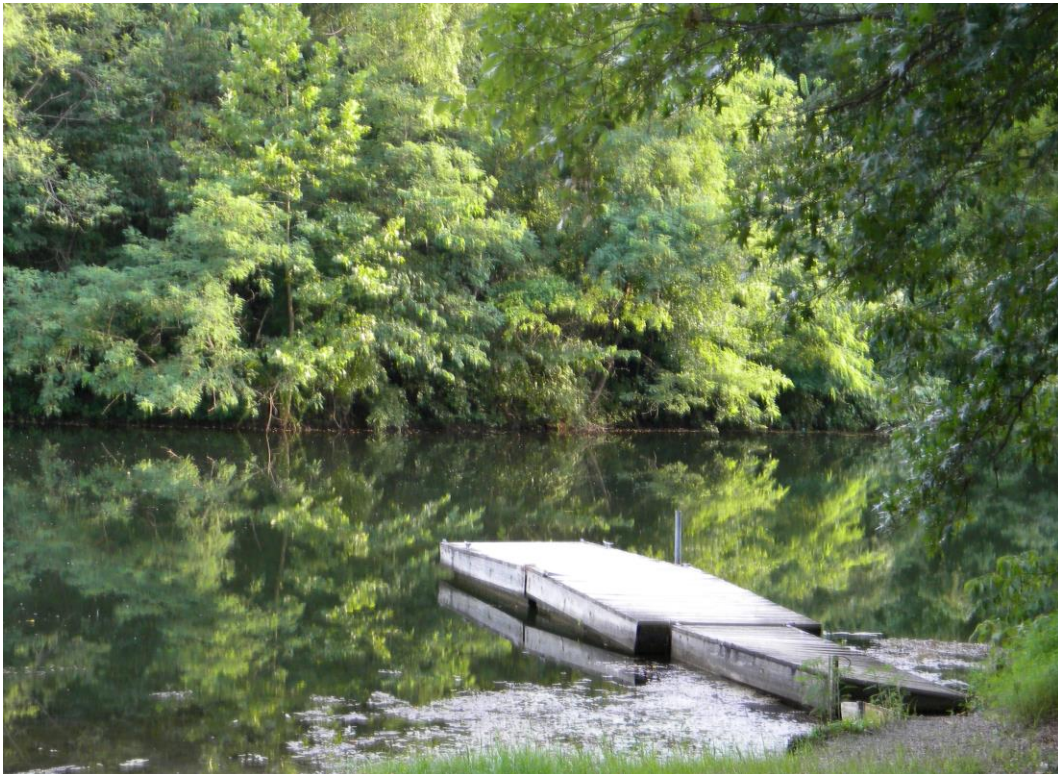
# DRAFT OBJECTIVES



## 5. Support active/healthy living

1. Expand & improve the pedestrian facility network
2. Expand & improve the bicycle facility network
3. Increase access to healthcare providers

# DRAFT OBJECTIVES



## 6. Preserve natural resources

1. Support environmentally sustainable transportation system expansion
2. Protect existing environmental assets
3. Support projects to reduce flooding

# DRAFT OBJECTIVES



## 7. Increase Economic Resilience

1. Support transportation investments that increase ability to recover quickly from natural or man-made disasters;
2. Abandon or reinforce transportation infrastructure vulnerable to natural or man-made disasters
3. Increase transportation system redundancy to maximize choice for all modes and abilities



# CALL FOR PROJECTS

---



# WHAT IS A CALL FOR PROJECTS?

- CALL FOR PROJECTS
  - Category 1: Projects Proposed for years 5 to 10
  - Category 2: Projects Proposed for year 11 and beyond
  - Project Submittals are due ***November 15th***
  - Refer to the Submission Guide Book
  - Contact Katy Shackelford, Brian Ziegler, Cary Minnis for HELP



# WHAT IS A CALL FOR PROJECTS?

- Projects from Cities, Villages, Counties and transportation agencies
- Funds will not be distributed from this solicitation
- Benefits of Submitting include identifying regional transportation priorities, informing the public as a part of this study, and increase the potential for these projects to be funded



# PROJECT CATEGORIES

- New and Improvement to Existing Roadways
- Bicycle Trails/Multi-modal Facilities
- Sidewalks/Pedestrian Facilities
- Streetscaping
- Public Transit



# POLICY GOALS



- Safety
- Access to Opportunities
- Quality of Life
- Financial Sustainability
- Active/Healthy Living
- Natural Resources
- Economic Resilience

# VITAL INFORMATION

- Scope/Description
- Exhibit
- Cost Estimate

**REQUIRED**



# NEXT STEPS

WHERE DO WE GO FROM HERE?

# NEXT STEPS

- Call for Projects
- Survey Results
- Future Conditions Analysis
- Financial and Implementation Plan
- Virtual Public Meeting #2





# THANK YOU

---



[KSHACKELFORD@LOCHGROUP.COM](mailto:KSHACKELFORD@LOCHGROUP.COM)



[DRIECHMANN@LOCHGROUP.COM](mailto:DRIECHMANN@LOCHGROUP.COM)



[WWW.GREATEREGYPTTRANSPORTATIONPLAN.ORG](http://WWW.GREATEREGYPTTRANSPORTATIONPLAN.ORG)