

**ABBREVIATIONS**

- CL - Centerline
- C.O - Cleanout
- D.S - Downspout
- E.P - Edge of Pavement
- F.F - Finished Floor
- F.G - Finished grade
- FL - Flowline
- G.L - Gutterline
- L.S - Light standard
- (T.B.R.) - To Be Removed
- T.O.C - Top of Curb
- T.P - Top of Pavement
- T.O.W - Top of Wall
- C.M - Concrete Monument
- T.W - Top of Walk
- PL - Property Line
- A.I - Area Inlet
- R/W - Right of Way
- G.I - Grate Inlet
- M.H - Manhole
- O.I.P - Old Iron Pipe
- R - Radius
- P.B - Pipe Bank
- D.B - Ditch Bank
- T.B - Top of Bank
- T.S - Top of Slope
- C.M.P - Corrugated Metal Pipe
- P.V.C - Polyvinyl Chloride Pipe
- V.C.P - Vitriified Clay Pipe
- C.P - Non-reinforced Concrete Pipe
- R.C.P - Reinforced Concrete Pipe
- D.I.P - Ductile Iron Pipe
- F/F - Face to Face
- B/B - Back to Back
- (U.L.P.) - Use in Place
- B.W - Bottom of Wall
- T.I - Top of Island
- T.G - Top of Grade
- (Typ.) - Typical
- Conc. - Concrete
- RE - Refer
- Detl. - Detail

**PROPOSED CONDITION LEGEND**

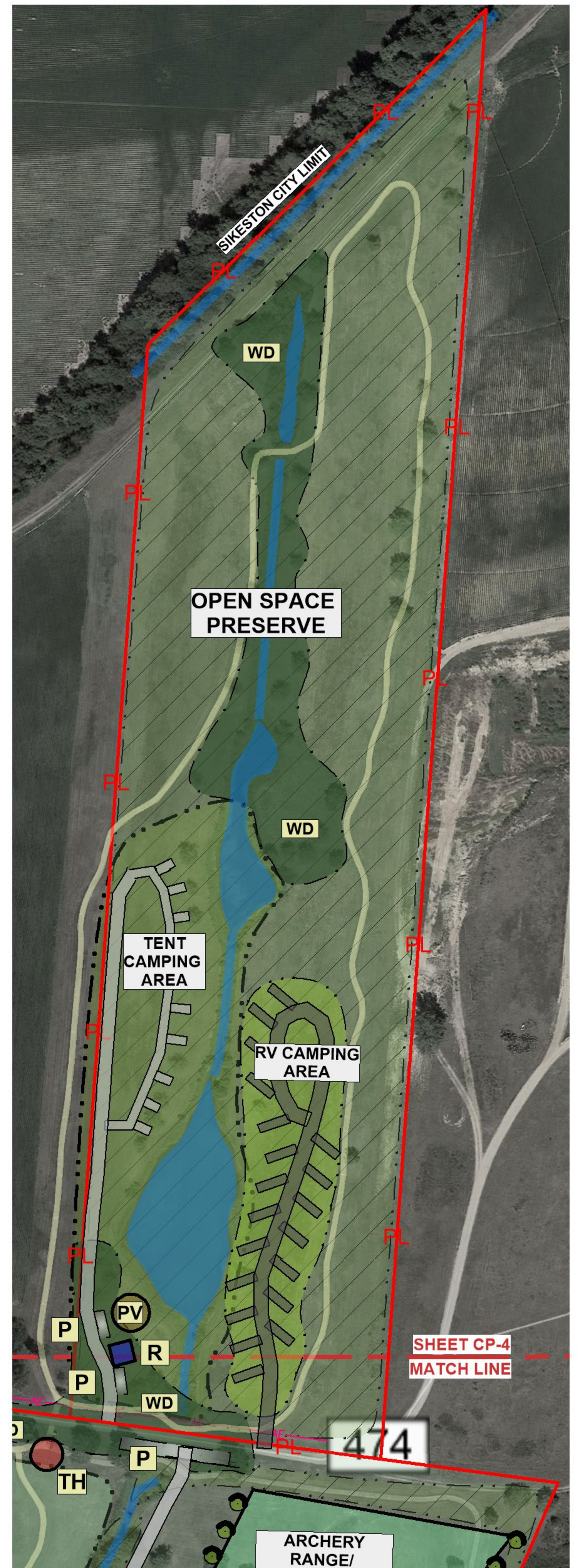
- (A)** NEW AQUATIC PLAY AREA ZONE
- (B)** NEW PLAYGROUND ZONE
- (C)** EXISTING PLAYGROUND RENOVATION
- (D)** EXISTING PLAYGROUND RE-SURFACING
- OR** NEW OUTDOOR FITNESS CENTER
- PV** NEW PAVILION LOCATION
- PC** NEW PEDESTRIAN CROSSING
- P** NEW PARKING LOT LOCATION
- TH** NEW TRAIL HEAD LOCATION
- SH** NEW SHADE STRUCTURE
- R** NEW RESTROOM BUILDING
- NEW MULTI-USE TRAIL (ASPHALT)
- NEW CONCRETE SIDEWALK
- NEW NATURE TRAIL (WOODCHIP)
- MOUNTAIN BIKE TRAIL
- POND/BIO-RETENTION BASIN ZONE
- LANDSCAPE IMPROVEMENT ZONE
- NATIVE GRASS/PRAIRIE ZONE
- RIPARIAN VEGETATION ZONE
- WOODLAND VEGETATION ZONE

**PARKING TABULATION:**  
DEDICATED NEW PARKING SPACES -

- EXISTING COMPLEX**
- Pickleball Courts - (10) spaces
  - Stephens Off Street - (10) spaces
- GOLF COURSE PROPERTY**
- (5) Baseball/Softball Fields - (100) spaces
  - Indoor Rec Complex - (297) spaces
  - (2) Soccer Fields - (40) spaces
  - Existing Clubhouse - (62) spaces
  - Disc Golf Course - (20) spaces
  - Archery Range - (40) spaces
  - Tent Campground Pavilion - (5) spaces
  - Campground Restroom - (5) spaces

**EXISTING CONDITION LEGEND**

- EXISTING PROPERTY LINE
- EXISTING ELECTRIC
- EXISTING WATERLINE



**PROPOSED INFORMATION**

- (1) Indoor Rec/Practice Center (Approx. 86,090 s.f.)
- (2) New Soccer Fields
- (5) Baseball/Softball Fields (Approx. 11.25 acres)
- (1) Concession/Restroom Bldg. (Approx. 3,000 s.f.)
- (1) New Playground Area
- (5) New Pavilions
- (1) New 4- Stall Automated Bating Cages
- (4) Trailheads
- (1) 18-hole Mini-Golf Course (24,350 s.f.)
- (1) Archery Range (Approx. 4.6 acres)
- (1) 9-hole Disc Golf Course (Approx. 11.5 ac.)
- (10) Primitive Tent Camping Sites
- (1) Composting Restroom
- (20) RV Camping Sites (Approx. 2.25 ac.)

**NORTH PARCEL - PRELIMINARY PLAN**

- NOTES:**
1. Boundary and utility information taken from City of Sikeston GIS and available public records.
  2. Existing conditions depicted are approximate only and based on available aerial photos as well as site visits conducted in February of 2020.
  3. Aerial photo information taken from Google Earth 2019.

Prepared By:

**SIKESTON REC-PLEX/BOOTHEEL GOLF COURSE**

August 19, 2020



**MASTER PLAN  
Preliminary Design**

